



FOOD RESCUE HERO™

Investing in Impact

The Unique Pitch for Funding Food Rescue



A few reminders:

Drop your questions in the Q&A as we go!

Yes, this is being recorded!

A recording of this presentation will be emailed within the next few days.

Links provided at the end of the webinar:

- Request a follow-up meeting
- Next webinar

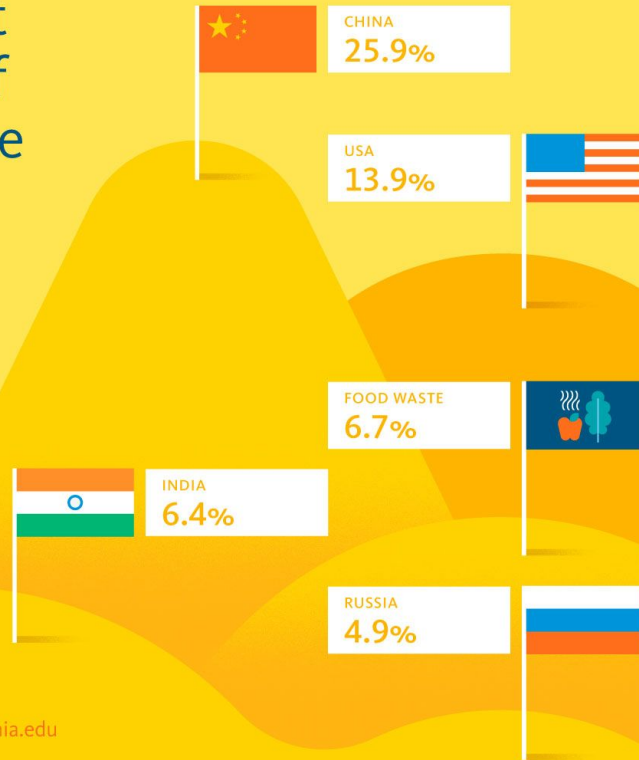


SETTING THE STAGE:
What is the cost of NOT engaging in food recovery?



The largest emitters of greenhouse gases

Percent of global greenhouse gas emissions*



Learn more at climate.universityofcalifornia.edu

UNIVERSITY
OF
CALIFORNIA

*Based on UN FAO Food Waste Footprint (2013) and WRI 2013 country-level emissions. Presented for scale; all countries contribute to food waste.

15.3 M
tonnes CO₂e
released each year
from food waste





GENERAL:

Cost of Climate Change

Extreme weather, fueled by climate change, cost the United States

\$165 billion in 2022 alone.

The Soaring Cost of Climate Change

Global reported economic losses attributed to weather, climate and water extremes (in billion U.S. dollars)



Figures adjusted for inflation.
Economic losses were reported for only 37 percent of all weather-, climate- and water-related disasters.
Source: World Meteorological Organization



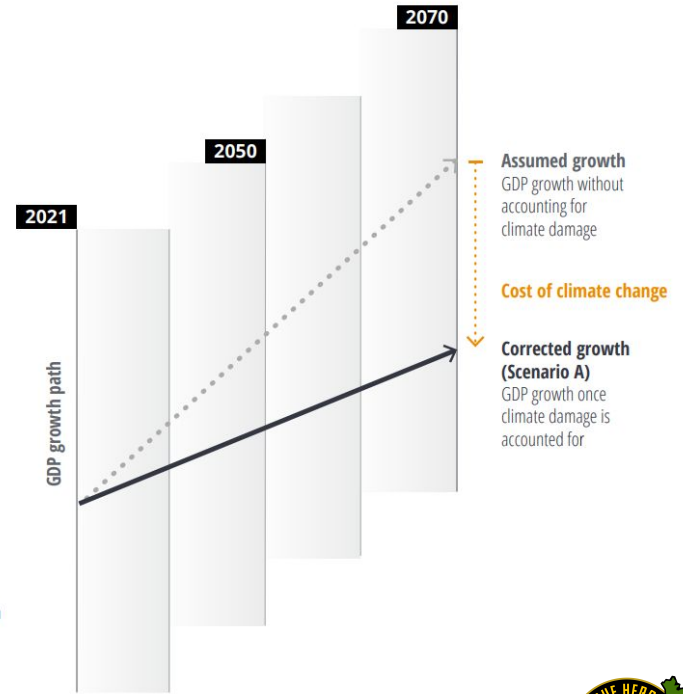
GENERAL:

Climate Crisis Cost Over Time

Inaction on climate change could cost world's economy **US\$178 trillion by 2070.**

In the U.S., nearly **900,000 jobs could disappear** each year due to climate damage.

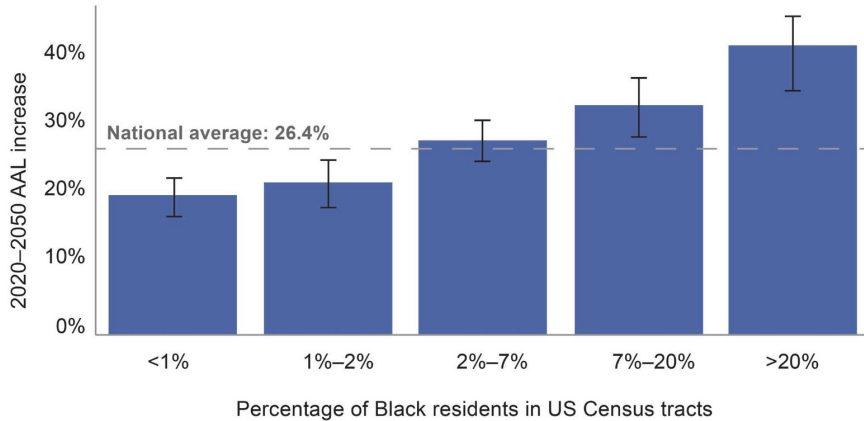
This illustration depicts the impact of accounting for climate change on the growth path for the US



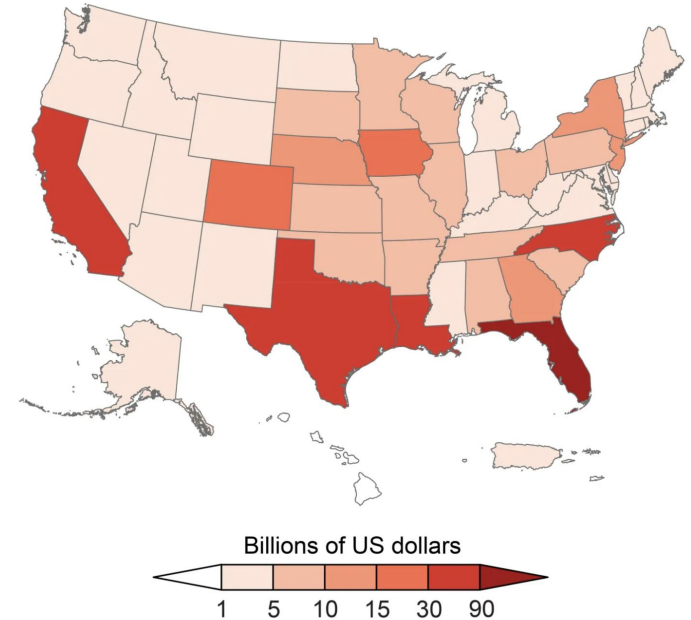
LOCAL: Impact of Climate Change

Climate change also affects specific communities differently

Projected Increases in Average Annual Losses (AALs) from Floods by 2050



Cost Associated with Climate Change by State



SUSTAINABLE DEVELOPMENT GOALS



SUSTAINABLE DEVELOPMENT GOALS



TARGET 12-3

HALVE GLOBAL PER CAPITA FOOD WASTE



LOCAL:

Local Initiatives

Many state governments are focusing on reducing food waste to impact climate outcomes

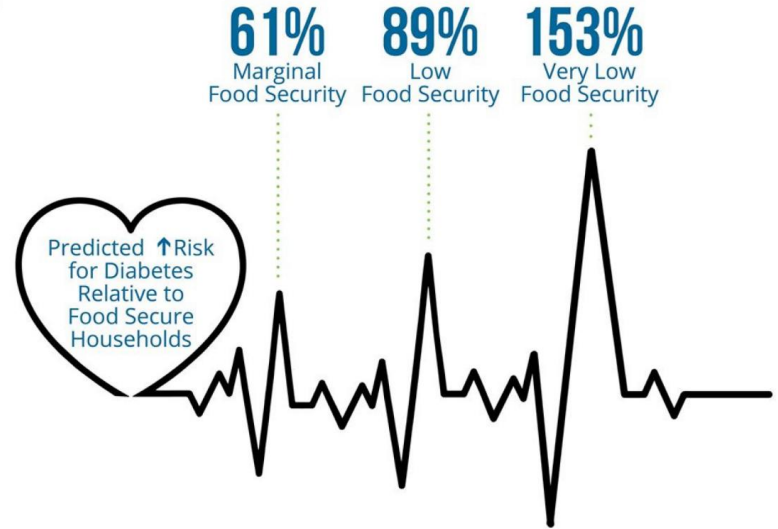
Join California's Climate Food Fight!



GENERAL:

Cost of Food Insecurity

Adults who are food insecure
**face significant increased risk for
chronic and acute health issues.**



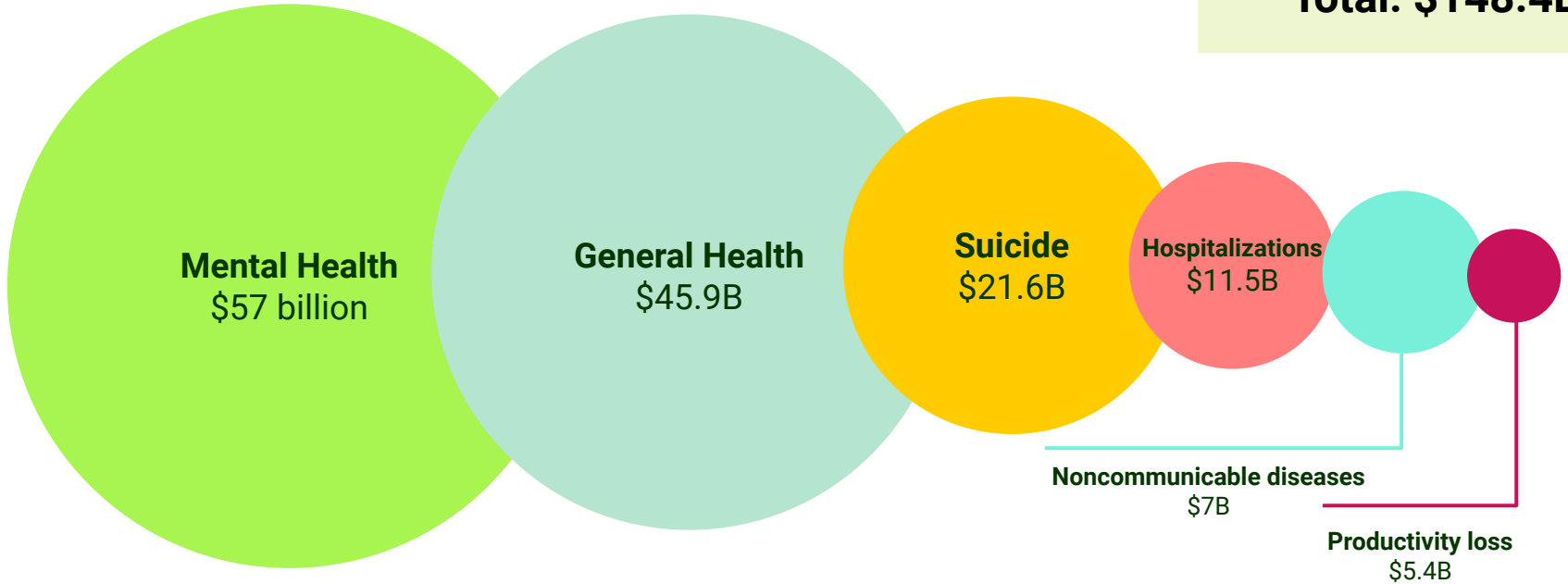
Source: USDA, Economic Research Service Calculations Using National Health Interview Survey Data 2011 - 2015.



GENERAL:

Cost of Food Insecurity

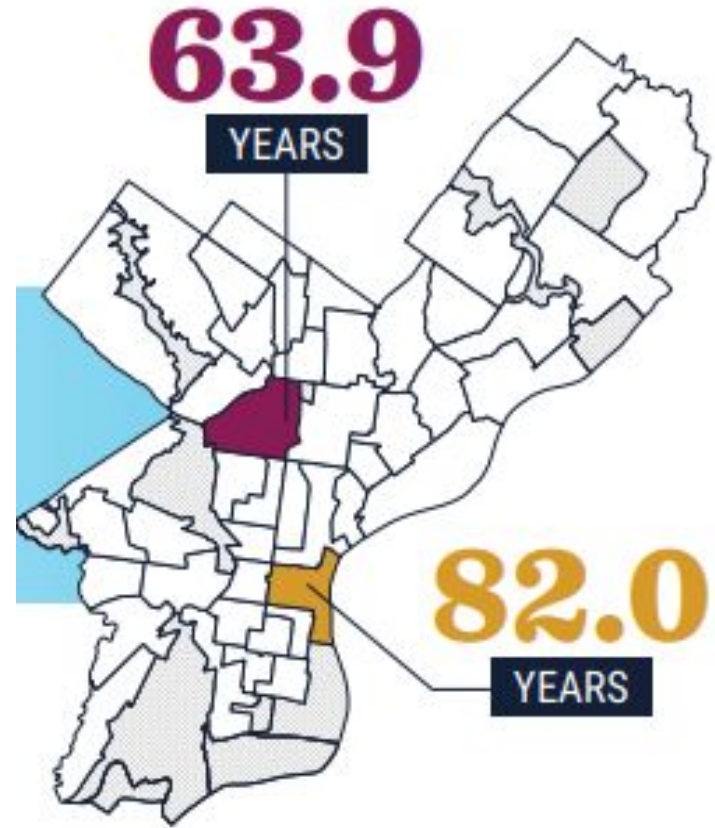
Total: \$148.4B



LOCAL:

Cost of Food Insecurity

In Philadelphia, living just a few miles difference can **decrease life expectancy nearly 20 years** due to lack of food access.



LOCAL:

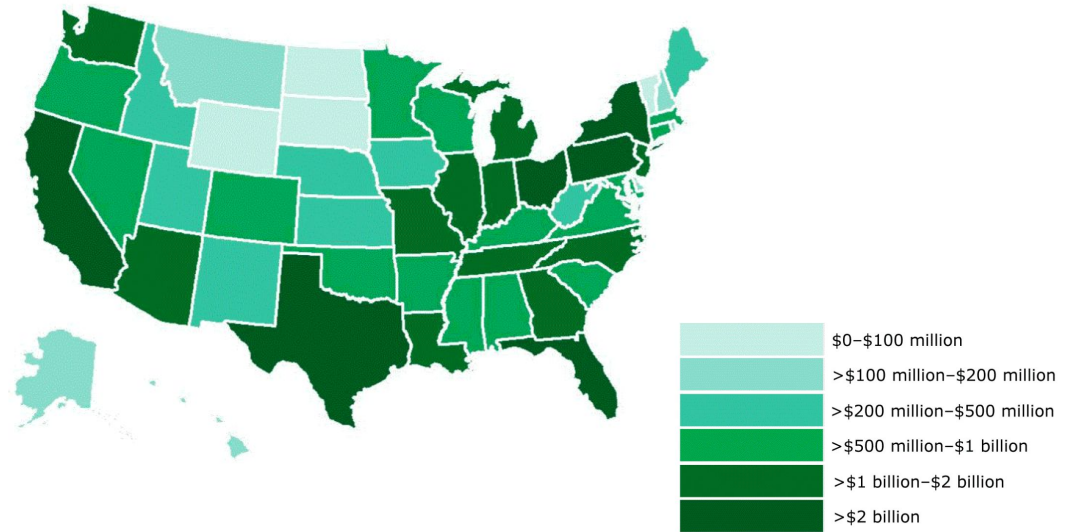
Cost of Food Insecurity

Food insecurity also presents higher costs **for the community**.

The median annual county-level health care cost associated with food insecurity in 2016 was

\$4,433,000

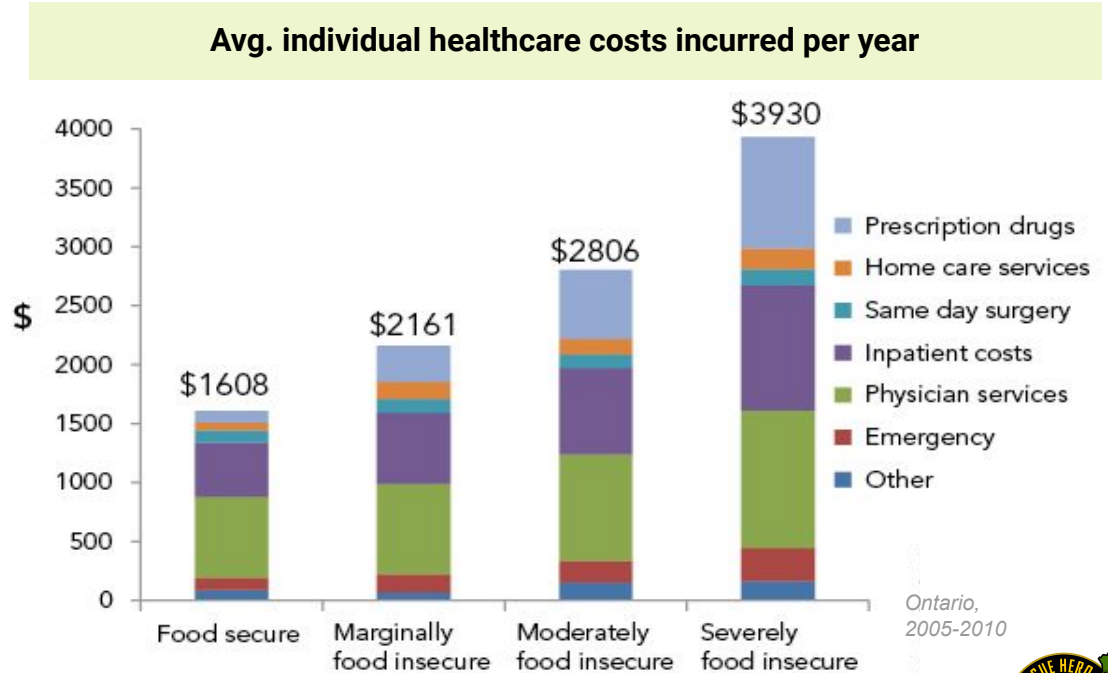
Health Care Cost Associated with Food Insecurity, by State



INDIVIDUAL:

Cost of Food Insecurity

Food insecurity presents higher costs **for the individual** in areas like healthcare.



We agree climate change and food insecurity are costly.

Why does funding **food rescue** specifically give funders a **higher ROI** than other approaches?

and

How can we get funders to think of grants funding food recovery as investments?



ROI:

The AND, not the OR

Return on investment:

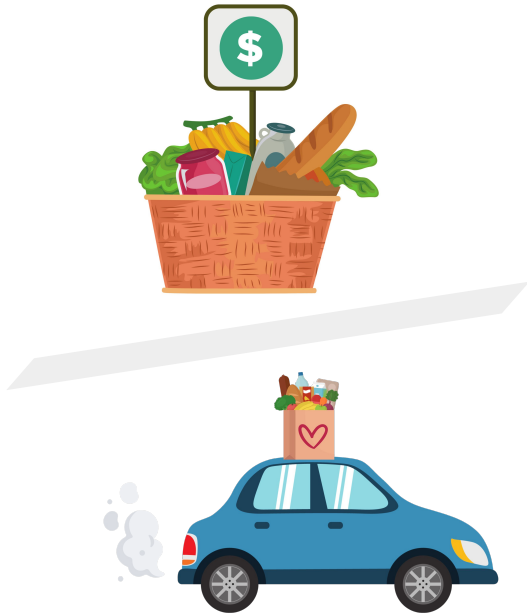
Ratio between net return and investment

$$\text{Return on Investment (ROI)} = \frac{\text{Net Return}}{\text{Cost of Investment}}$$



ROI:

Calculating the ROI of Food Rescue



ROI OF FOOD RECOVERY: **Multinodal Approach**

1. Food recovery is a multimodal approach:



Food Insecurity



Climate Change

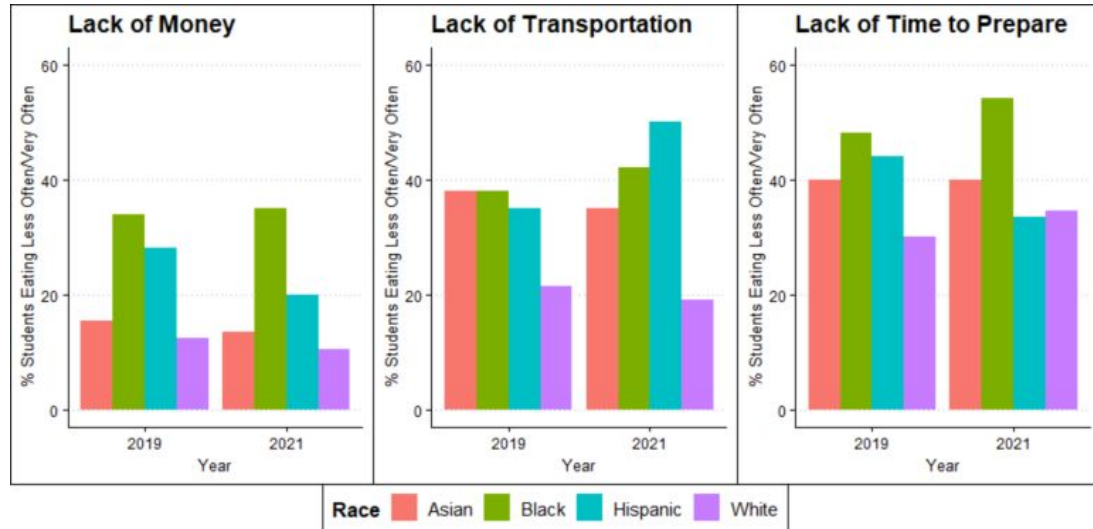
ROI OF FOOD RECOVERY:

Barriers to Food Security

2. Within the node of hunger fighting, food recovery addresses multiple barriers

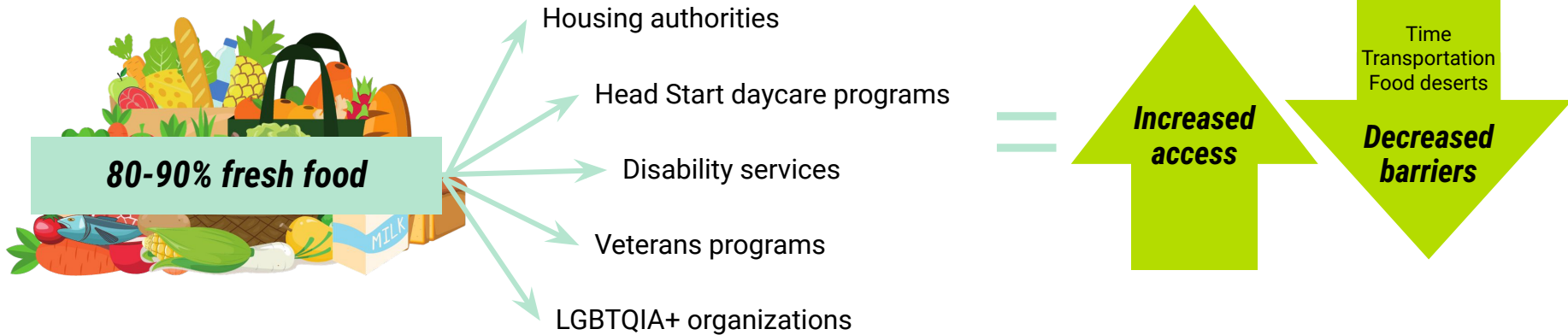
- Money
- Time
- Transportation
- Food deserts
- Cooking equipment
- Preparation knowledge

“How do I cook eggplant?”

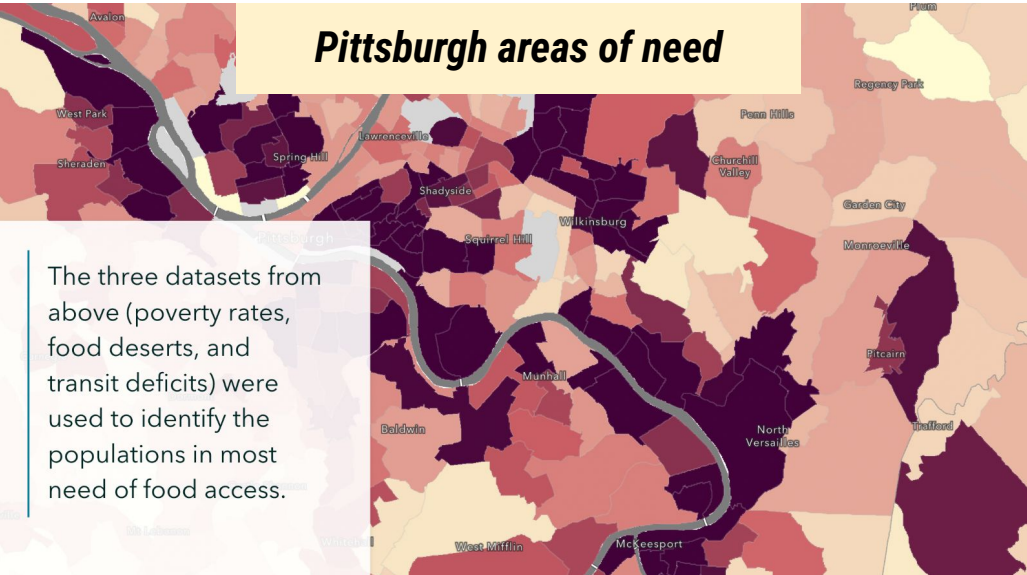


ROI OF FOOD RECOVERY: **Expanded Food Access**

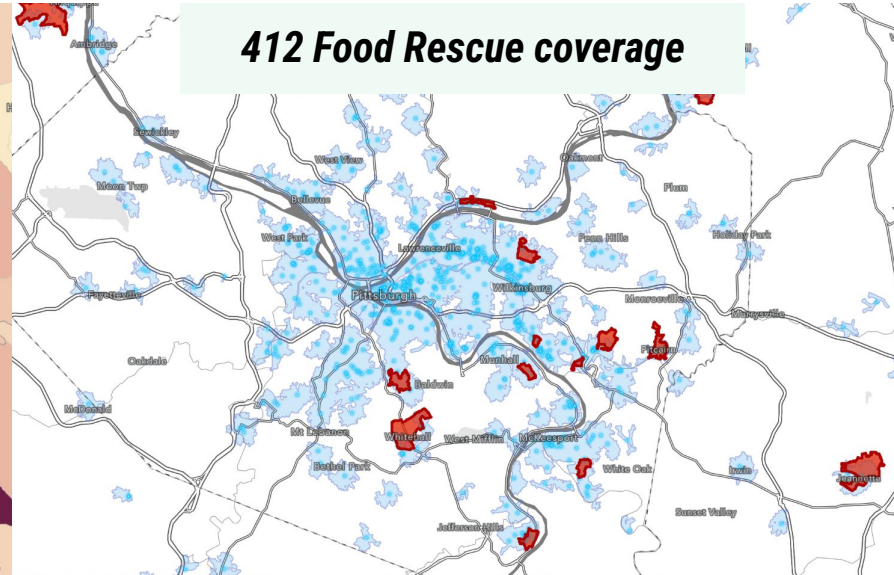
"We don't have nearly enough food pantries open regular days and hours to take donations."



ROI OF FOOD RECOVERY: **Expanded Food Access**



The three datasets from above (poverty rates, food deserts, and transit deficits) were used to identify the populations in most need of food access.



ROI OF FOOD RECOVERY:

Reducing Potential Waste After Donation

3. The focus on reducing food waste actually makes the charitable food system more efficient and reduces waste there

"We even have pantries that have too many donations from grocery stores, and have to find another pantry to take their excess."



ROI OF FOOD RECOVERY:

Reducing Potential Waste After Donation

3. The focus on reducing food waste actually makes the charitable food system more efficient and reduces waste there

"We even have pantries that have too many donations from grocery stores, and have to find another pantry to take their excess."



ROI OF FOOD RECOVERY:

Nutrition Security

4. Food recovery makes an impact on NUTRITION security as well as food security

Food security: Having reliable access to a sufficient quantity of affordable food.

Nutrition security: Consistent access, availability, and affordability of foods and beverages that promote well-being, prevent disease, and, if needed, treat disease, particularly among racial/ethnic minority, lower income, and rural and remote populations including tribal communities and insular areas.

WHAT IS NUTRITION SECURITY?

Consistent access to nutritious foods that promote optimal health and well-being for all Americans, throughout all stages of life.



Food banks:



38%

OF FOOD DISTRIBUTED IS
PERISHABLE

e.g. milk, eggs,
fresh or frozen fruits
and vegetables, bread



62%

OF FOOD DISTRIBUTED IS
NON-PERISHABLE

e.g. pasta and sauce,
cereal, rice, shelf-stable
juice and canned soup,
fruit, and vegetables



Toronto, 2014

Tough for food pantries to distribute fresh food because of:

- Storage space & conditions
- Timing of donations
- Frequency of donations
- Limited hours



ScienceDirect



Food rescue:



80-90%
of food distributed is
PERISHABLE



=

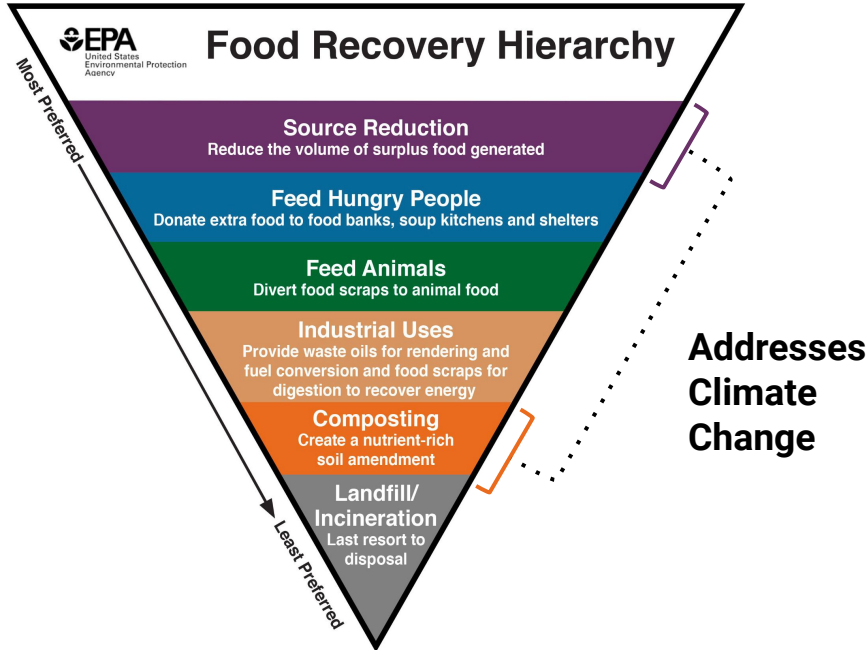


40-50%
of food distributed is
PRODUCE



ROI OF FOOD RECOVERY:

Reduction of Food Waste



\$165B

extreme weather by climate change cost to U.S. in 2022

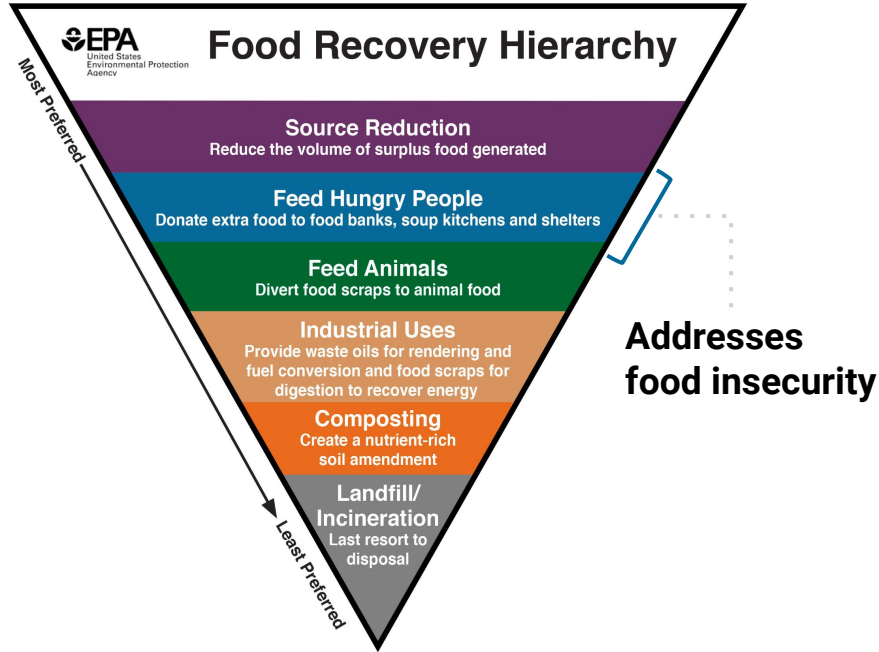
\$ saved through reduction of Climate Change

Investment in Food Waste reduction



ROI OF FOOD RECOVERY:

Putting It All Together



\$165B + **\$148.4B**

extreme weather by climate change cost to U.S. in 2022

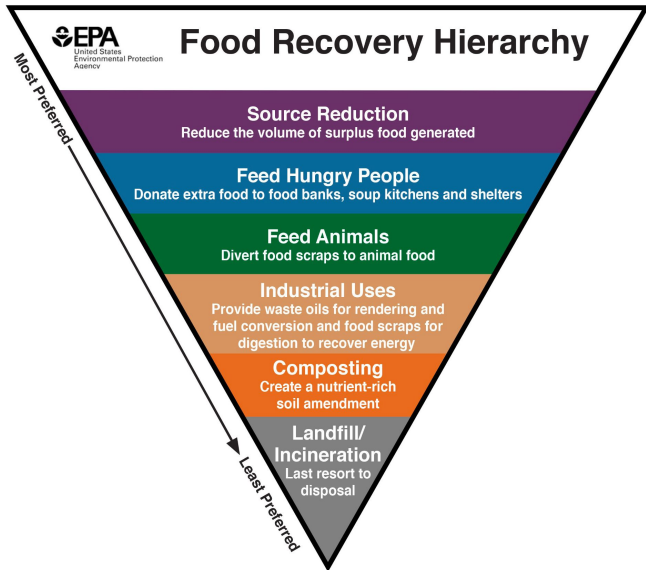
potential reduction of healthcare costs

Reduction in Climate Change + Healthcare

Investment in Food Recovery
(Food Waste + Food Insecurity)



From

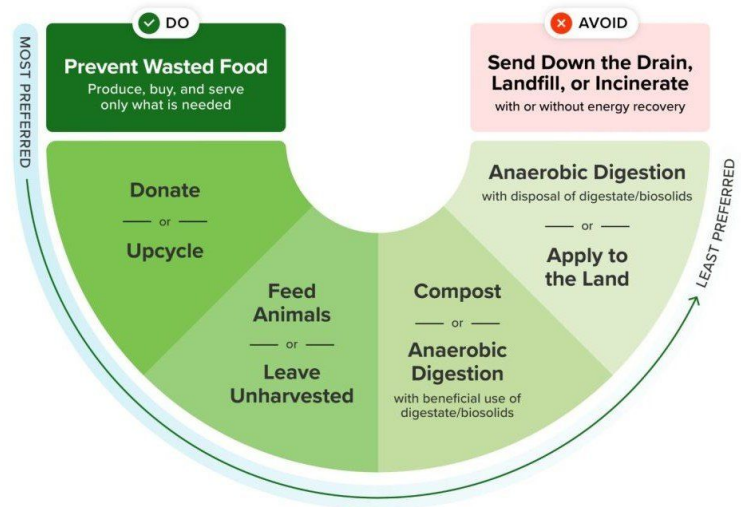


To



Wasted Food Scale

How to reduce the environmental impacts of wasted food



October 2023



ROI OF FOOD RECOVERY:

Intangible ROI

What does it mean to put food within reach?



Time



Energy



Dignity

SETTING THE STAGE:

What is the cost of NOT engaging in food recovery?

CLOSING THE NARRATIVE:

What is the IMPACT of scaling food recovery?

All the benefits they expect from engaging in anti-hunger work (or climate work)

+

Nutrition Security

Increased Access

Reduction in methane emissions

Reduction in costs for climate impact and healthcare

Localized benefits





Making greater impact, together.



FoodRescueHero.org